

# ★Global House SHUGAKUINN★

## (36 ROOMS)

★ Recommended point ★

Live-in custodian

Kitchen Renewal

Free Internet

Security Camera

Auto-lock

- Furnished with fridge(two-door type),desk,chair,bed with storage, all of them are brand new!!!
- Contract to be renewed every year-Stay as long as you like while you are student
  - No deposit,gratuity fee and renewal fee!!
  - Bedding for hire available!



## Contact Information for inquiries

NATIONAL STUDENTS INFORMATION CENTER CO.,LTD.

TEL

**075-352-0020**

NISSEI KYOTO EKIMAE BLDG.  
SHICHIJYO-SAGARU,KARASUMA-STREET,  
SHIMOGYO-KU,KYOTO 600-8216, JAPAN  
Main switchboard:075-352-0020 FAX:075-352-0551

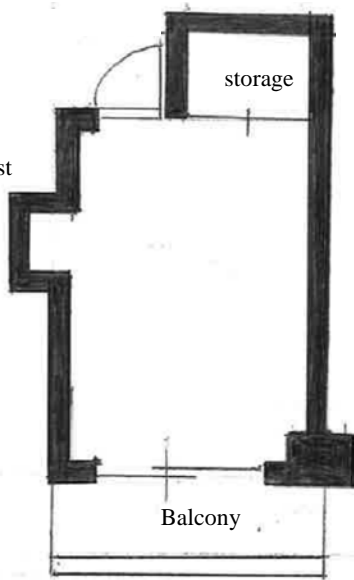
## Global House SHUGAKUINN (36 ROOMS)

|           |                 |   |  |  |
|-----------|-----------------|---|--|--|
| Condition | Address         | 14-4 Yamabata Kawagishi cho,Sakyo-ku, Kyoto city 606-8005                                       |  |  |
|           | Closest station | 5-min walk from SHUGAKUINN Station(Eizan line)<br>15-min walk from MATSUGASAKI Station (Subway) |  |  |
|           | Outline         | Intended Use  | Foreign Student Dormitory  |  |
|           |                 | Structure   | Reinforced concrete construction / 4 floors above ground and 1 below (water-receiver tank room ) |  |
|           |                 | Number of rooms   | 36rooms ( 2F -12 rooms / 3F-12 rooms / 4F - 12 rooms )   |  |
|           | Built date      | 1992/03   | The common kitchen is expected to be The common kitchen is expected to be renewed in mid April   |  |

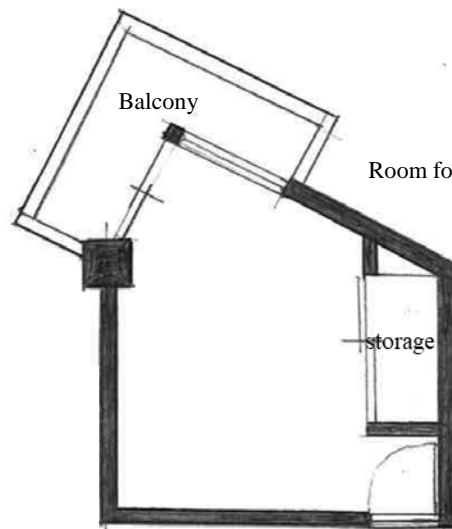
|  |                                  |                     |   |                  |             |               |                  |             |                            |                    |         |
|--|----------------------------------|---------------------|---|------------------|-------------|---------------|------------------|-------------|----------------------------|--------------------|---------|
| Common Area Facilities   | Auto Locking System (Front Gate) |                     | ○   | Security cameras |             | ○             | Coin Laundry     |             | ○<br>(coin-operated)<br>1F |                    |         |
|  | Parking Lot                      |                     | —   | Elevator         |             | —             | Dryer            |             | ○<br>(coin-operated)       | Vending machine    | —       |
|  | SatelliteTV                      |                     | ○   | Washstands       |             | ○<br>2F~4F    | Toilet           |             | ○ 1F-4F                    |                    |         |
|  | Parking Lot                      | Bicycle             | ○   | Kitchen          | Electricity | ○             | Built-in kitchen | Electricity | —                          | Common shower room | ○<br>1F |
|  |                                  | small motor vehicle | —   |                  | Gas         | —             |                  | Gas         | ○                          |                    |         |
| Motor Bike   |                                  | —                   |   |                  |             |               |                  |             |                            |                    |         |
| Exclusively space Facilities   | Room key                         |                     | Cylinder key  | Bathroom drier   |             | —             | Washing Machine  |             | —                          | Refrigerator       | ○       |
|  | Toilet Water Bidet Toilet        |                     | —   | Closet           |             | ○             | Shoe box         |             | —                          | Hanging shelf      | —       |
|  | Chapter title page               |                     | —   | Room             |             | Western style | Room light       |             | ○                          | Balcony            | ○       |
|  | Water                            |                     | —   | Type of the gas  |             | —             | Air conditioner  |             | ○                          | Laundry pole       | ○       |
|  | Internet Access                  |                     | Internet Optic fiber ※Internet fee contains in the room rent. |                  |             |               |                  |             |                            |                    |         |
| 【Special Instruction】 Other fixtures : bed · desk · chair · desklight · refrigerator      ※Apartment Insurance included.<br>It is not possible to bring TV into the room |                                  |                     |   |                  |             |               |                  |             |                            |                    |         |

## Floor plan

Room for facing east

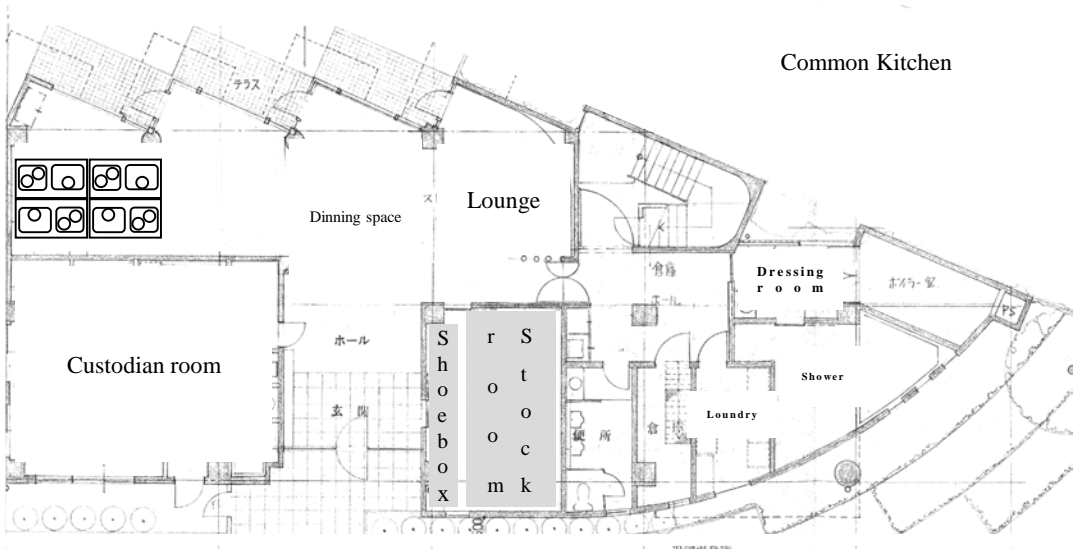


Room for facing south

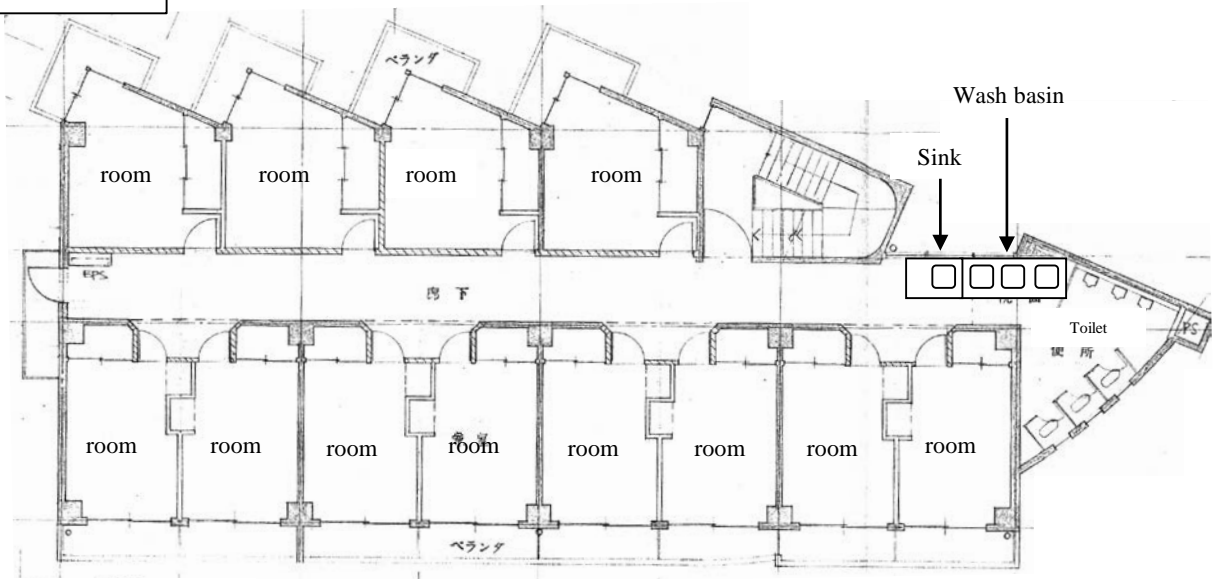


## Ground-plan

### First floor



### 2,3,4 floor



# CIRCUMFERENCE MAP



【 Access to each university 】

|  |                         |
|--|-------------------------|
| Kyoto University of the Arts             | By bicycle 8min(1700m)  |
| Kyoto Notre Dame University              | By bicycle 8min(1700m)  |
| Kyoto Prefectural University             | By bicycle 10min(2500m) |
| Kyoto University yoshida campus          | By bicycle 13min(3200m) |
| Kyoto Institute of Technology University | On foot 14min(1100m)    |

【 Circumference Institution 】

|                   |                   |              |
|-------------------|-------------------|--------------|
| convenience store | Famiry Mate       | on foot 3min |
|                   | Seven eleven      | on foot 6min |
| Bank              | Kyoto Bank        | on foot 5min |
|                   | KyotoShinkin Bank | on foot 7min |
| Post office       |                   | on foot 6min |
| Drug store        |                   | on foot 8min |
| Super Market      |                   | on foot 5min |
| Koban             |                   | on foot 7min |

**Global House  
SHUGAKUINN  
<36rooms>**

**Only at the fast time**

|                   |              |
|-------------------|--------------|
| Guarantee Charge  | ¥10,000      |
| Deposit           | None         |
| Agent charge      | None         |
| Fire insurance    | ※Need to get |
| Room cleaning fee | ¥ 10,000     |

**Monthly fee**

|                      |  |
|----------------------|--|
| Rent                 | ¥35,500  |
| Common service       | Included in rent                               |
| Water (fixed amount) | Included in rent                               |
| Internet             | Included in rent                               |
| Linen                | ¥1,000<br>(Tax-excluded)<br>※only an applicant |
| Electricity          | actual cost                                    |
| Coin Laundry         | ¥200 per use                                   |
| Shower               | ¥100 for 15 min                                |

- ①When you move in you are required to pay the first month rent (¥35,500) , the bedclothes rental fee (¥1,000+tax) and the guarantee charge(¥10,000).  
 ②Please read a rule book .  
 ③The staff will give you contract documents, an application form for the dormitory and an application form for automatic account transfers when you move in.  
 ④Residence card and acceptance letter of Kyoto University are required due to enrollment in the guarantee system.  
 ⑤You need to get fire insurance if you are enrolled at university when the contract is signed.

|    |                  |          |                    |          |        |      |            |  |
|----|------------------|----------|--------------------|----------|--------|------|------------|--|
| 4F | 401              | 402      | 403                | 404      |        |      |            |  |
|    | ¥ 35,500         | ¥ 35,500 | ¥ 35,500           | ¥ 35,500 | Stairs | Sink | Wash basin |  |
| 3F | 301              | 302      | 303                | 304      |        |      |            |  |
|    | ¥ 35,500         | ¥ 35,500 | ¥ 35,500           | ¥ 35,500 | Stairs | Sink | Wash basin |  |
| 2F | 201              | 202      | 203                | 204      |        |      |            |  |
|    | ¥ 35,500         | ¥ 35,500 | ¥ 35,500           | ¥ 35,500 | Stairs | Sink | Wash basin |  |
| 1F |                  |          |                    |          |        |      |            |  |
|    | Built-in kitchen |          | Dining room/Lounge |          | Stairs |      |            |  |

**<Balcony facing south>**

|    |                  |          |          |          |            |          |          |             |        |
|----|------------------|----------|----------|----------|------------|----------|----------|-------------|--------|
| 4F | 405              | 406      | 407      | 408      | 409        | 410      | 411      | 412         |        |
|    | ¥ 35,500         | ¥ 35,500 | ¥ 35,500 | ¥ 35,500 | ¥ 35,500   | ¥ 35,500 | ¥ 35,500 | ¥ 35,500    | Toilet |
| 3F | 305              | 306      | 307      | 308      | 309        | 310      | 311      | 312         |        |
|    | ¥ 35,500         | ¥ 35,500 | ¥ 35,500 | ¥ 35,500 | ¥ 35,500   | ¥ 35,500 | ¥ 35,500 | ¥ 35,500    | Toilet |
| 2F | 205              | 206      | 207      | 208      | 209        | 210      | 211      | 212         |        |
|    | ¥ 35,500         | ¥ 35,500 | ¥ 35,500 | ¥ 35,500 | ¥ 35,500   | ¥ 35,500 | ¥ 35,500 | ¥ 35,500    | Toilet |
| 1F |                  |          |          |          |            |          |          |             |        |
|    | Custodian's room |          | Entrance |          | Stock room | Toilet   | Laundry  | Shower room |        |

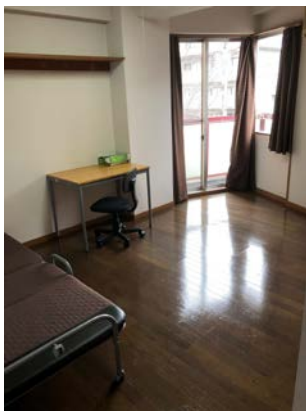
**<Balcony facing east>**



Global House  
SHUGAKUINN  
<36rooms>



Room for facing south



Room for facing east



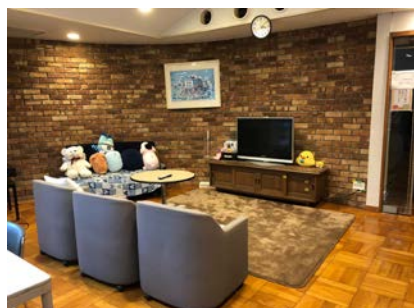
Wash basin



Shower room



Coin Laundry



Lounge



Common kitchen  
※ The common kitchen is expected  
to be renewed in mid April.



Shoe box and stock room