

KYOTO INTERNATIONAL STUDENT ORIENTATION CENTER

SATSUKI DORMITORY (45 ROOMS)

★ Recommended point ★

Renewal

Nasic Net (Wi-Fi)

Security Camera

Auto-lock

Orienter (support staff of this dormitory), Dormitory Manager and Resident Assistant (RA) stay in the dormitory for 24 hours to support resident's dormitory lives.

※Orienter is a person who supports lives of international residents in the dorm by giving them advice on life in Japan. He/ She will also organize events and exchange programs with the neighbors. .

Contact Information for inquiries

NATIONAL STUDENTS INFORMATION CENTER CO.,LTD.

TEL **075-352-0020**

NISSEI KYOTO EKIMAE BLDG.
SHICHIJYO-SAGARU,KARASUMA-STREET,
SHIMOGYO-KU,KYOTO 600-8216, JAPAN
Main switchboard: 075-352-0020 FAX: 075-352-0551



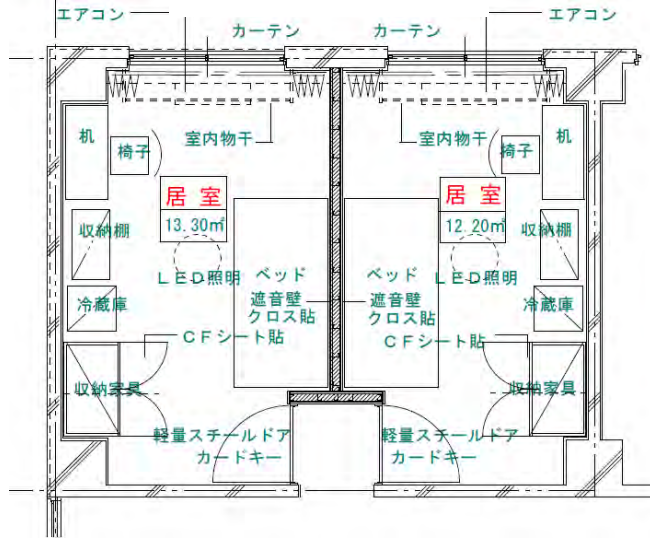
SATSUKI DORMITORY (45 ROOMS)

Condition	Address	120-2, Kanbee-cho, Shimotachiurinoboru, Ogawa-dori, Kamigyo-ku, Kyoto-shi, Kyoto JAPAN 602-8047		
	Closest station	11-min by walk from Marutamachi Station (Karasuma Line, Kyoto Municipal Subway) 4-min by walk from Horikawa Shimodachiuri Station (Kyoto City Bus)		
	Outline	Intended Use	Foreign Student Dormitory	
		Structure	Reinforced Concrete Building with 4stories above ground level and 1beneath 1story Pent House.	
		Number of rooms	45 rooms	
Built Date		Apr.1977	Renewal open completely in Mar.2014.	

Common Area Facilities	Auto Locking System (Front Gate)	○	Security cameras	○	Coin Laundry	○ (coin-operated) 1F				
	Parking Lot	—	Elevator	—	Dryer	○ (coin-operated)	Vending machine	—		
	SatelliteTV	○	Washstands	○ 1F~4F	Toilet	Male 1F•2F/Female 1F•3F•4F				
	Parking Lot	Bicycle	○	Kitchen	Electricity	—	Hot-water Supply System	Electricity	—	Common shower room
small motor vehicle		—	Gas		○ 1F~4F	Gas		○		
Motor Bike		—								
Exclusively space Facilities	Room key	Card key	Bathroom drier	—	Washing Machine	—	Refrigerator	○		
	Toilet Water Bidet Toilet	—	Closet	○	Shoe box	—	Hanging shelf	—		
	Chapter title page	—	Floor cover	Cushioned floor	Room light	○	Balcony	—		
	Water	—	Type of the gas	—	Air conditioner	○	Laundry pole	○		
	Internet Access	NasicNet (Optic fiber) ※Internet fee contains in the room rent.								
【Special Instruction】 Other fixtures: bed•desk•chair•curtain ※Apartment Insurance included. It is not possible to bring TV into the room										

Floor-plan

Gross room area: 12.20~13.30m²

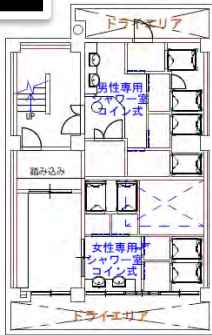


Ground-plan

N



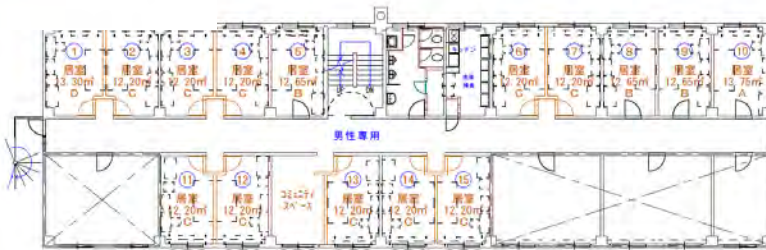
B1F



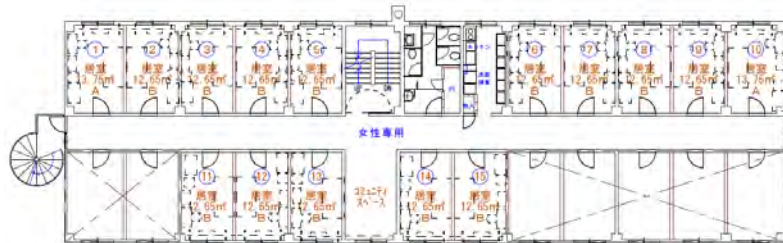
1F



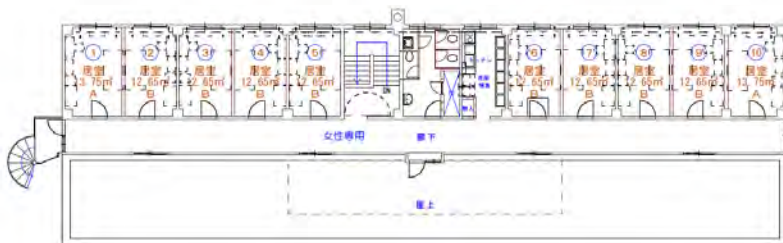
2F



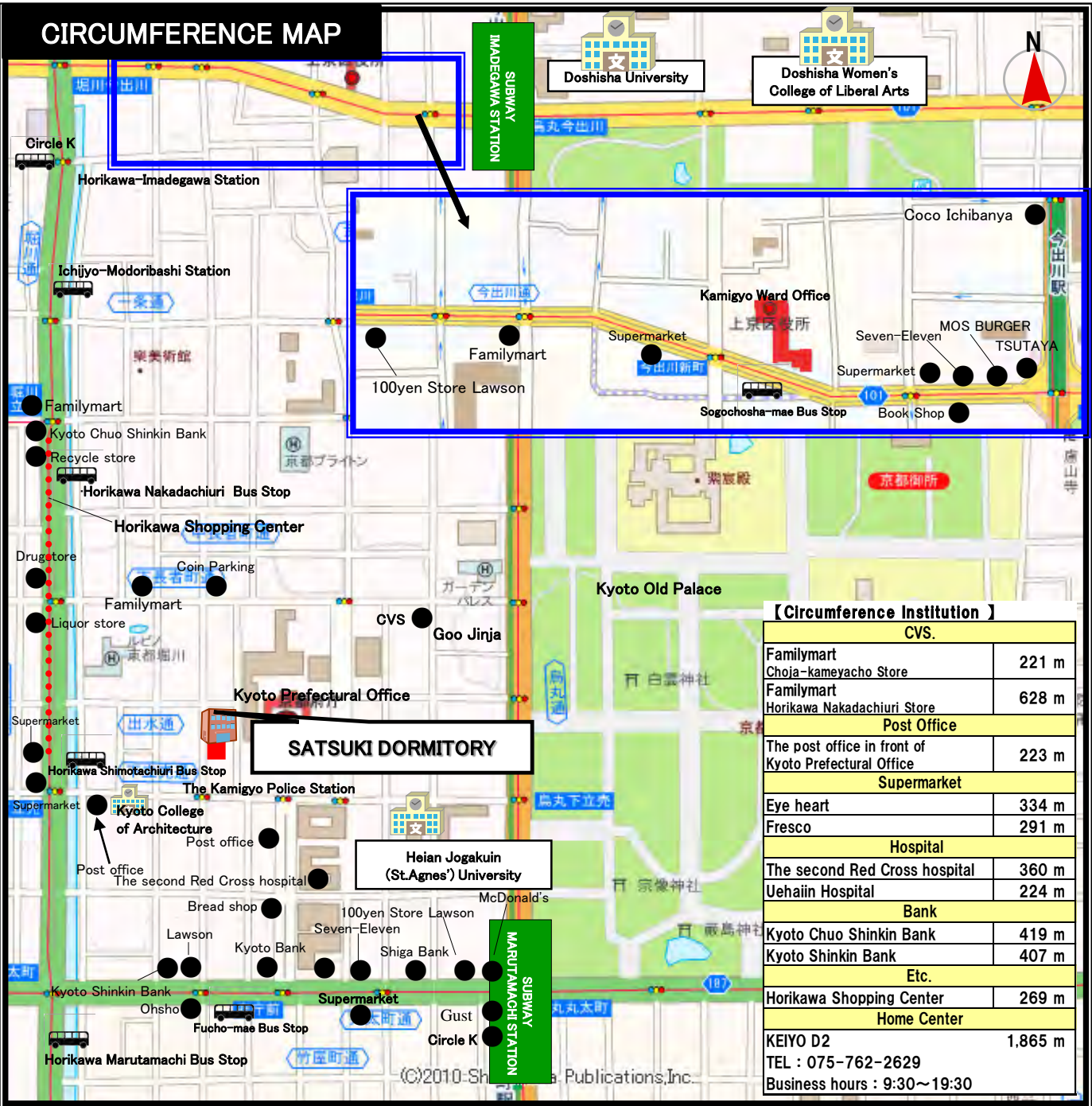
3F



4F



CIRCUMFERENCE MAP



【Circumference Institution】	
CVS.	
Familymart	221 m
Choja-kameyacho Store	628 m
Familymart	628 m
Horikawa Nakadachiuri Store	
Post Office	
The post office in front of Kyoto Prefectural Office	223 m
Supermarket	
Eye heart	334 m
Fresco	291 m
Hospital	
The second Red Cross hospital	360 m
Uehain Hospital	224 m
Bank	
Kyoto Chuo Shinkin Bank	419 m
Kyoto Shinkin Bank	407 m
Etc.	
Horikawa Shopping Center	269 m
Home Center	
KEIYO D2	1,865 m
TEL : 075-762-2629	
Business hours : 9:30~19:30	

The map is approved for use by Shobunsha Publications, Inc. (No.08W045)

【Access to each university】

Heian Jogakuin (St. Agnes') University	Kyoto Campus	On foot	about 7 min (510 m)
Doshisha University	Imadegawa Campus (West gate)	By bicycle	about 6 min (1,455 m)
	Shinmachi Campus	By bicycle	about 5 min (1,262 m)
Doshisha Women's College of Liberal Arts	Imadegawa Campus (Main gate)	By bicycle	about 7 min (1,721 m)
Kyoto Prefectural University of Medicine	Kawaramachi Campus	By bicycle	about 8 min (1,826 m)
Kyoto Prefectural University		By bicycle	about 15 min (3,603 m)
Bukkyo University		By bicycle	about 15 min (3,608 m)
Otani University Junior College		By bicycle	about 10 min (2,644 m)
Kyoto University	Yoshida Campus	By bicycle	about 12 min (2,965 m)
Kyoto University of Art and Design		By bicycle	about 20 min (4,943 m)
Kyoto Sangyo University		By bicycle	about 28 min (6,973 m)
Kacho Junior College · Kyoto Kacho University		By bicycle	about 15 min (3,566 m)

24 HOUR SUPPORT ~NASIC CLUB 24~



Trouble seems to happen when you least anticipate it. It's important for you to understand "What you should do" and "Who you should consult" when the time comes. *Nasic Club 24* offers around the clock support for those living alone and feeling the burdens of worry and trouble. Health concerns, creating relationships, and seeking employment are but a few of the things *Nasic Club 24* can help you with; and we always follow up to make certain things are right for you.



"There is no key" and "The air conditioner doesn't work" Maintenance Services 24

A lost key, a malfunctioning air conditioner, there's no water flow in the kitchen, a noisy neighbour, or even a suspicious person skulking around your apartment building...aren't amusing. Small problems, annoying problems, and especially potentially dangerous ones; depend on *Maintenance Service 24* to answer your call 24 hours a day 365 days a year. Even if it isn't your first time living alone worry is unnecessary with *Maintenance Service 24*.

Lost or Damaged Key

Safety Confirmation of the Tenants

The condition of the air conditioner is bad.

Neighborhood Trouble or Suspicious Persons

- ※Nasic staff will visit to confirm the problem is fixed
- ※With maintenance issues Nasic staff will inform you of possible solutions.
- ※When repair is necessary a tradesperson or specialist will be called in. (Costs are according to type of repair.)



Consultation on such things as sexual harassment and human relations

Sexual Harassment & Human Relations HOTLINE

A special counselor provides consultation, guidance and counseling over the telephone.

You don't have to deal with harassment, bullying, physical or mental abuse, or stalking alone. It is especially frightening when it happens away from home. We have counselors and mental health professionals that can help. Also, if you have a mental health emergency our counselors are there to help you through that as well. We are here to be your ally against the obstacles against your mental health, happiness, and success.

Consultation, Guidance and Counseling by Phone, Mail, FAX

Paid services
Personal counseling, Investigation, Personal protection, etc.



"Illness, injury, existing medical conditions, or even just general health issues"

Medical Services 24

Ease your mind and please call. A doctor or nurse will give you clear advice.

Medical issues are unpredictable and when they occur need to be taken care of quickly and reliably. Living alone abroad doesn't need to be a worry with *Medical Services 24*. *Nasic* staffs expert medical consultants to help you with your medical needs. We connect you to the medical services you need, and take the mystery out of the local clinics and hospitals. We also have reliable mental health consultants to aid you in times of crisis. Please ease your mind and give us a call. *Medical Services 24* is here to help.

Consultation of Health and Medical Treatment

Consultation of Mental Health

Information of Neighboring Clinic and Hospital

※ According to the content of the consultation, it might have take time to guide.



Reliable accident and liability coverage

Insurance service

In a moment of financial peril due to accident we offer comprehensive insurance coverage to protect you.

Encounters with unpredictable accidents that no matter how they occur may lead to a case of owing liability. In such moments, *Nasic* will be there is reliable insurance coverage.

※The deductible (The tenant is responsible for the deductible according to the insurance plan purchased) .

Home Contents Insurance

Indemnity for Lessor (Landlord)

Maintenance Cost For Leasing Building

Indemnity for Third Party

※This insurance service is offered for all members of *Nasic Club 24* .

SATSUKI DORMITORY (45 ROOMS)

Guarantee Charge	¥10,000
Deposit	None
Agent charge	None
Fire insurance	Including coverage for liability

Monthly Fee	
Rent	¥33,500
Common service	Included in rent.
Water (fixed amount)	Included in rent.
Disposal of garbage ※1	Included in rent.
Internet	Included in rent.
Linen	¥1,000 (Tax-excluded)
Electricity	actual cost
Coin Laundry	¥200 per use
Shower	¥100 for 15 min

After moving in

①When you move in you are required to pay the first month rent (¥33,500), the bedclothes rental fee (¥1,000+tax) and the guarantee charge(¥10,000).

②Please read a rule book .

③The staff will give you contract documents, an application form for the dormitory and an application form for automatic account transfers when you move in.

④Residence card and acceptance letter of Kyoto University are required due to enrollment in the guarantee system.

⑤You should enroll in Personal Liability Insurance for Students and Special Clause for Persons Living Alone at the Kyoto University Co-op.

※1 There is no garbage collection service on Sundays, holidays and between January 1st and January 4th.

4F	401	402	403	404	405	Step way	Toilet	Kitchen	406	407	408	409	410
	¥33,500	¥33,500	¥33,500	¥33,500	¥33,500				¥33,500	¥33,500	¥33,500	¥33,500	¥33,500
3F	301	302	303	304	305	Step way	Toilet	Kitchen	306	307	308	309	310
	¥33,500	¥33,500	¥33,500	¥33,500	¥33,500				¥33,500	¥33,500	¥33,500	¥33,500	¥33,500
2F	201	202	203	204	205	Step way	Toilet	Kitchen	206	207	208	209	210
	¥33,500	¥33,500	¥33,500	¥33,500	¥33,500				¥33,500	¥33,500	¥33,500	¥33,500	¥33,500
1F						Step way	Men's toilets	Women's toilet	Kitchen	101	102	103	
	Private	Consultation space								¥33,500	¥33,500	¥33,500	

<Balcony on the east side>

3F			311	312	313		314	315				
	—	—	¥33,500	¥33,500	¥33,500	—	¥33,500	¥33,500	—	—	—	—
2F			211	212		213	214	215				
	—	—	¥33,500	¥33,500	—	¥33,500	¥33,500	¥33,500	—	—	—	—
1F											104	105
	Japanese room	Office	Entrance	Multipurpose space					Laundry room	Storage	¥33,500	¥33,500

<Balcony on the west side>

KYOTO INTERNATIONAL STUDENT ORIENTATION CENTER

MIZUKI DORMITORY (44 ROOMS)

★ Recommended point ★

Renewal

Nasic Net (Wi-Fi)

Security Camera

Auto-lock

Orienter (support staff of this dormitory), Dormitory Manager and Resident Assistant (RA) stay in the dormitory for 24 hours to support resident's dormitory lives.

※Orienter is a person who supports lives of international residents in the dorm by giving them advice on life in Japan. He/ She will also organize events and exchange programs with the neighbors. .

Contact Information for inquiries

TEL **075-352-0020**

NISSEI KYOTO EKIMAE BLDG.
SHICHIJYO-SAGARU, KARASUMA-STREET,
SHIMOGYO-KU, KYOTO 600-8216, JAPAN
Main switchboard: 075-352-0020 FAX: 075-352-0551



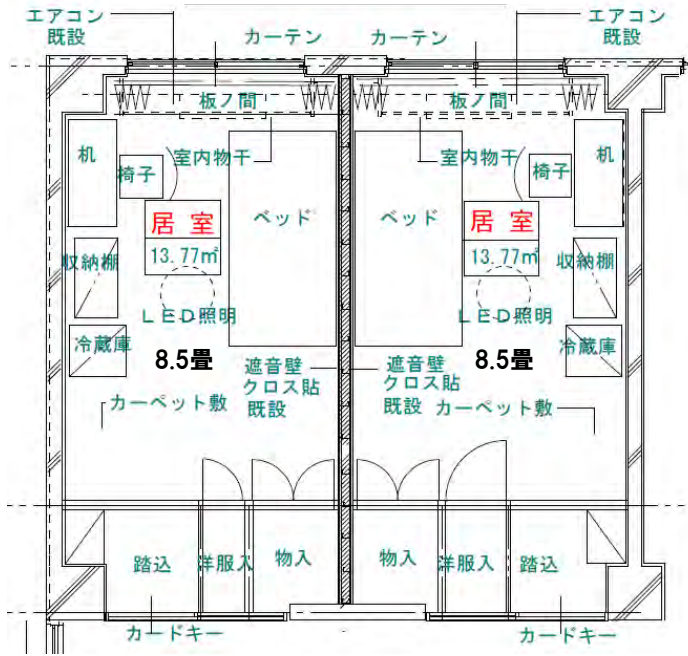
MIZUKI DORMITORY (44 ROOMS)

Condition	Address	26-88, Yoshidakonoe-cho, Sakyo-ku, Kyoto-shi, Kyoto JAPAN 606-8315		
	Closest station	15-minu by walk from Jingu-marutamachi Station (Oto Line ,Keihan Main Line) 4-min by walk from Koedoori Station (Kyoto City Bus)		
	Outline	Intended Use	International Student Dormitory	
		Structure	Reinforced Concrete Building with 4stories above ground level and 1story Pent House.	
Number of rooms		44 rooms		
			Renewal open completely in Mar.2014.	

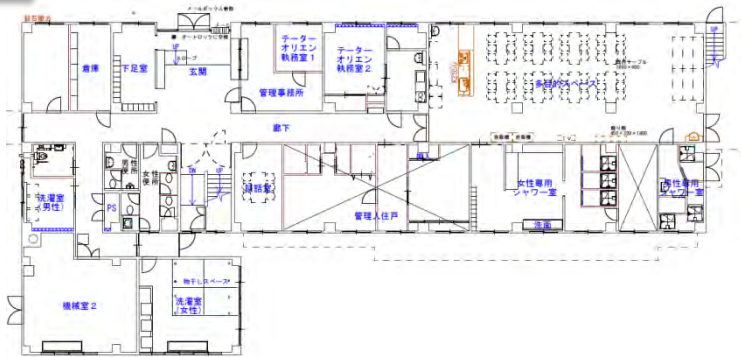
Common Area Facilities	Auto Locking System (Front Gate)		○	Security cameras		○	Coin Laundry		○ (coin-operated) 1F		
	Parking Lot		—	Elevator		—	Dryer		○ (coin-operated)	Vending machine	—
	SatelliteTV		○	Washstands		○ 2F~3F	Toilet		Male 1F•2F/Female 1F•3F		
	Parking Lot	Bicycle	○	kitchen	Electricity	○1F	Hot-water Supply System	Electricity	—	Common shower room	○ (coin-operated) 1F
small motor vehicle		—	Gas		○ 2F~3F	Gas		○			
	Motor Bike	—									
Exclusively space Facilities	Room key		Card key	Bathroom drier		—	Washing Machine		—	Refrigerator	○
	Toilet Water Bidet Toilet		—	Closet		○	Shoe box		—	Hanging shelf	—
	Chapter title page		—	Floor cover		Carpet, Wooden floor	Room light		○	Balcony	—
	Water		—	Type of the gas		—	Air conditioner		○	Laundry pole	○
	Internet Access		NasicNet (Optic fiber) ※Internet fee contains in the room rent.								
【Special Instruction】 Other fixtures : bed•desk•chair•curtain ※Apartment Insurance included. It is not possible to bring TV into the room											

Floor-plan

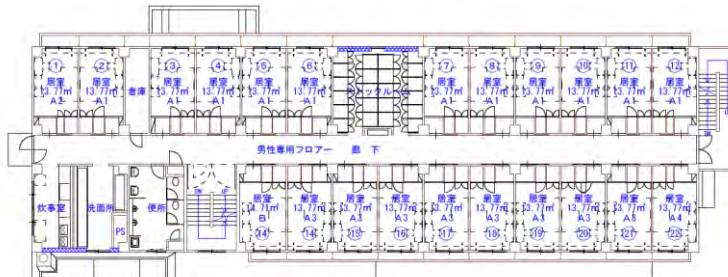
専有面積: 28.08㎡
共有面積: 3.74㎡



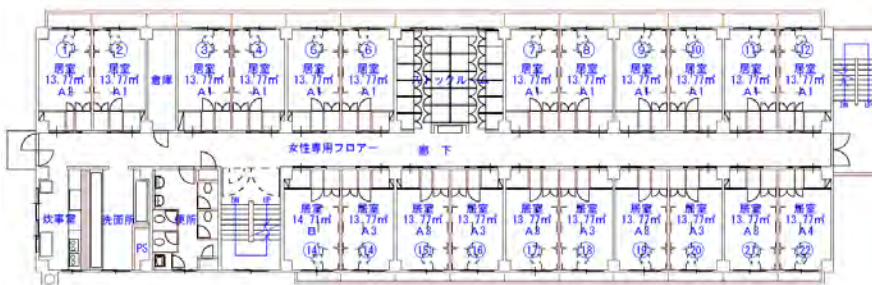
Ground-plan



1 F

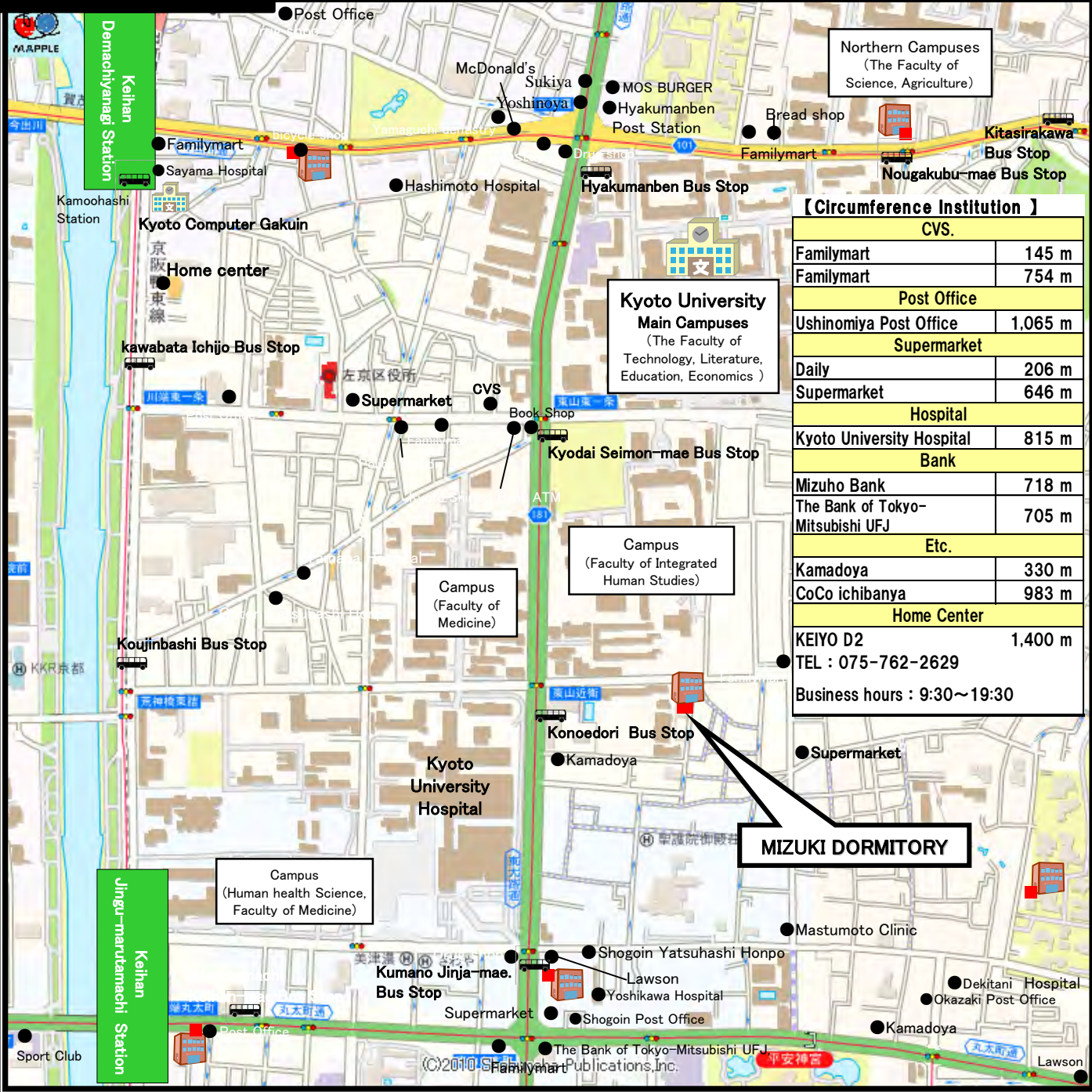


2 F



3 F

CIRCUMFERENCE MAP



【Access to each university】

Kyoto University	Yoshida Campus	On foot	about 6 min (466 m)
Kyoto Prefectural University of Medicine	Kawaramachi Campus	By bicycle	about 5 min (1,200 m)
Kyoto Prefectural University		By bicycle	about 15 min (3,638 m)
Doshisha University	Shinmachi Campus	By bicycle	about 13 min (3,269 m)
Doshisha Women's College of Liberal Arts	Imadegawa Campus	By bicycle	about 11 min (2,642 m)
Bukkyo University	Imadegawa Campus (Main gate)	By bicycle	about 10 min (2,340 m)
Kacho Junior College · Kyoto Kacho University		By bicycle	about 23 min (5,764 m)
Kyoto University of Art and Design		By bicycle	about 8 min (1,922 m)
Kyoto Seika University		By foot and train	about 30 min From Demachiyana Station to Kyoto Seika Dai-mae Station,, Eizan Electric Railway.
Kyoto Sangyo University		By foot and train and bus	about 35 min From Demachiyana Station to Nikentyaya Station, Eizan Electric Railway. Next, take a free shuttle bus to the campus.

24 HOUR SUPPORT ~NASIC CLUB 24~



Trouble seems to happen when you least anticipate it. It's important for you to understand "What you should do" and "Who you should consult" when the time comes. *Nasic Club 24* offers around the clock support for those living alone and feeling the burdens of worry and trouble. Health concerns, creating relationships, and seeking employment are but a few of the things *Nasic Club 24* can help you with; and we always follow up to make certain things are right for you.



"There is no key" and "The air conditioner doesn't work" Maintenance Services 24

A lost key, a malfunctioning air conditioner, there's no water flow in the kitchen, a noisy neighbour, or even a suspicious person skulking around your apartment building...aren't amusing. Small problems, annoying problems, and especially potentially dangerous ones; depend on *Maintenance Service 24* to answer your call 24 hours a day 365 days a year. Even if it isn't your first time living alone worry is unnecessary with *Maintenance Service 24*.

Lost or Damaged Key

Safety Confirmation of the Tenants

The condition of the air conditioner is bad.

Neighborhood Trouble or Suspicious Persons

- ※Nasic staff will visit to confirm the problem is fixed
- ※With maintenance issues Nasic staff will inform you of possible solutions.
- ※When repair is necessary a tradesperson or specialist will be called in. (Costs are according to type of repair.)



Consultation on such things as sexual harassment and human relations

Sexual Harassment & Human Relations HOTLINE

A special counselor provides consultation, guidance and counseling over the telephone.

You don't have to deal with harassment, bullying, physical or mental abuse, or stalking alone. It is especially frightening when it happens away from home. We have counselors and mental health professionals that can help. Also, if you have a mental health emergency our counselors are there to help you through that as well. We are here to be your ally against the obstacles against your mental health, happiness, and success.

Consultation, Guidance and Counseling by Phone, Mail, FAX

Paid services
Personal counseling, Investigation, Personal protection, etc.



"Illness, injury, existing medical conditions, or even just general health issues"

Medical Services 24

Ease your mind and please call. A doctor or nurse will give you clear advice.

Medical issues are unpredictable and when they occur need to be taken care of quickly and reliably. Living alone abroad doesn't need to be a worry with *Medical Services 24*. *Nasic* staffs expert medical consultants to help you with your medical needs. We connect you to the medical services you need, and take the mystery out of the local clinics and hospitals. We also have reliable mental health consultants to aid you in times of crisis. Please ease your mind and give us a call. *Medical Services 24* is here to help.

Consultation of Health and Medical Treatment

Consultation of Mental Health

Information of Neighboring Clinic and Hospital

※ According to the content of the consultation, it might have take time to guide.



Reliable accident and liability coverage

Insurance service

In a moment of financial peril due to accident we offer comprehensive insurance coverage to protect you.

Encounters with unpredictable accidents that no matter how they occur may lead to a case of owing liability. In such moments, *Nasic* will be there is reliable insurance coverage.

※The deductible (The tenant is responsible for the deductible according to the insurance plan purchased) .

Home Contents Insurance

Indemnity for Lessor (Landlord)

Maintenance Cost For Leasing Building

Indemnity for Third Party

※This insurance service is offered for all members of *Nasic Club 24* .

MIZUKI DORMITORY (44 ROOMS)

After moving in

Guarantee charge	¥10,000
Deposit	None
Agent charge	None
Fire insurance	Including coverage for liability

Monthly Fee	
Rent	¥33,500
Common service	Included in rent.
Water (fixed amount)	Included in rent.
Disposal of garbage ※1	Included in rent.
Internet	Included in rent.
Linen	¥1,000 ※Tax-excluded
Electricity	actual cost
Coin Laundry	¥200/per use
Shower	¥100 for 15 min

①When you move in you are required to pay the first month rent (¥33,500), the bedclothes rental fee (¥1,000+tax) and the guarantee charge(¥10,000).

②Please read a rule book.

③The staff will give you contract documents, an application form for the dormitory and an application form for automatic account transfers when you move in.

④Residence card and acceptance letter of Kyoto University are required due to enrollment in the guarantee system.

⑤You should enroll in Personal Liability Insurance for Students and Special Clause for Persons Living Alone at the Kyoto University Co-op.

※1 There is no garbage collection service on Sunday, holidays and between January 1st and January 4th.

3F	301	302	303	304	305	306	Stock room	307	308	309	310	311	312
	¥33,500	¥33,500	¥33,500	¥33,500	¥33,500	¥33,500		¥33,500	¥33,500	¥33,500	¥33,500	¥33,500	¥33,500
2F	201	202	203	204	205	206	Stock room	207	208	209	210	211	212
	¥33,500	¥33,500	¥33,500	¥33,500	¥33,500	¥33,500		¥33,500	¥33,500	¥33,500	¥33,500	¥33,500	¥33,500
1F	Entrance			Office			Orientaler's Office	Kitchen	Multidiscipline space				

< Balcony on the east side >

3F	313		314		315		316		317		318		319		320		321		322	
	Kitchen	Lavatory	Toilet	Step way	¥33,500	¥33,500	¥33,500	¥33,500	¥33,500	¥33,500	¥33,500	¥33,500	¥33,500	¥33,500	¥33,500	¥33,500	¥33,500	¥33,500	¥33,500	¥33,500
2F	213		214		215		216		217		218		219		220		221		222	
	Kitchen	Lavatory	Toilet	Step way	¥33,500	¥33,500	¥33,500	¥33,500	¥33,500	¥33,500	¥33,500	¥33,500	¥33,500	¥33,500	¥33,500	¥33,500	¥33,500	¥33,500	¥33,500	¥33,500
1F	Toilet	Washing room		Step way	Combina tion room	Management's resting room		Japanes e room	Women's show room			Men's show room								

< Balcony on the west side >