

# KYOTO INTERNATIONAL STUDENT ORIENTATION CENTER

## MIZUKI DORMITORY (44 ROOMS)

### ★ Recommended point ★

Renewal

Nasic Net (Wi-Fi)

Security Camera

Auto-lock

Orienter (support staff of this dormitory), Dormitory Manager and Resident Assistant (RA) stay in the dormitory for 24 hours to support resident's dormitory lives.

※ Orienter is a person who supports lives of international residents in the dorm by giving them advice on life in Japan. He/ She will also organize events and exchange programs with the neighbors.

### Contact Information for inquiries

**NATIONAL STUDENTS INFORMATION CENTER CO.,LTD.**

TEL **075-352-0020**

NISSEI KYOTO EKIMAE BLDG.  
SHICHIJYO-SAGARU,KARASUMA-STREET,  
SHIMOGYO-KU,KYOTO 600-8216, JAPAN  
Main switchboard:075-352-0020 FAX:075-352-0551



# MIZUKI DORMITORY (44 ROOMS)

Condition	Address	26-88, Yoshidakonoe-cho, Sakyo-ku, Kyoto-shi, Kyoto JAPAN 606-8315		
	Closest station	15-minu by walk from Jingu-marutamachi Station (Oto Line ,Keihan Main Line) 4-min by walk from Koedoori Station (Kyoto City Bus)		
	Outline	Intended Use	International Student Dormitory	
		Structure	Reinforced Concrete Building with 4stories above ground level and 1story Pent House.	
		Number of rooms	44 rooms	
Built Date	Mar.1978	Renewal open completely in Mar.2014.		

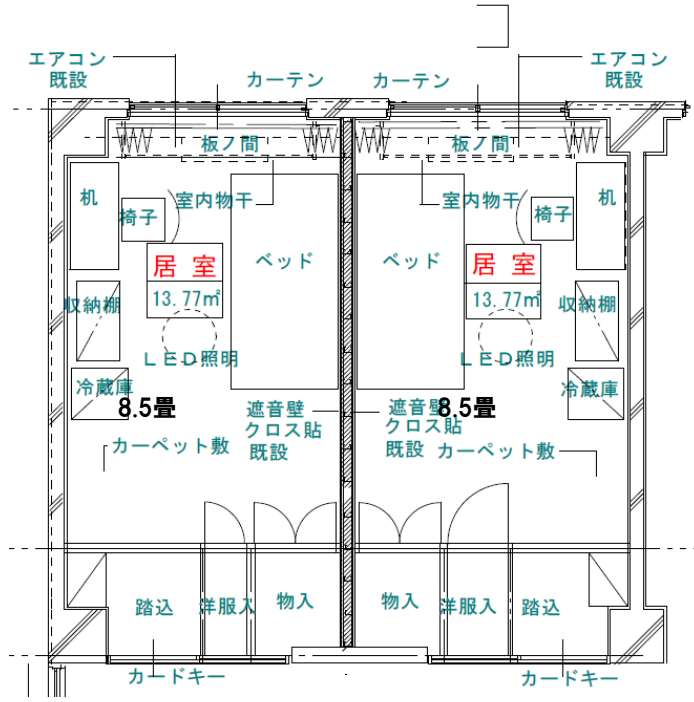
Common Area Facilities	Auto Locking System (Front Gate)	○	Security cameras	○	Coin Laundry	○ (coin-operated) 1F				
	Parking Lot	—	Elevator	—	Dryer	○ (coin-operated)	Vending machine	—		
	SatelliteTV	○	Washstands	○ 2F~3F	Toilet	Male 1F・2F / Female 1F・3F				
	Parking Lot	Bicycle	○	kitchen	Electricity	○1F	Hot-water Supply System	Electricity	—	Common shower room
small motor vehicle		—	Gas		○ 2F~3F	Gas		○		
	Motor Bike	—								
Exclusively space Facilities	Room key	Card key	Bathroom drier	—	Washing Machine	—	Refrigerator	○		
	Toilet Water Bidet Toilet	—	Closet	○	Shoe box	—	Hanging shelf	—		
	Chapter title page	—	Floor cover	Carpet, Wooden floor	Room light	○	Balcony	—		
	Water	—	Type of the gas	—	Air conditioner	○	Laundry pole	○		
	Internet Access	NasicNet (Optic fiber) ※Internet fee contains in the room rent.								
<p>【Special Instruction】 Other fixtures : bed・desk・chair・curtain ※Apartment Insurance included.  <b>It is not possible to bring TV into the room</b></p>										



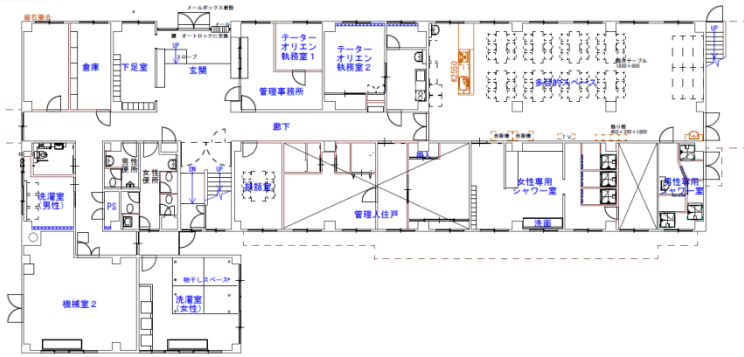
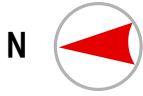
← MIZUKI DORMITORY MAP

# Floor-plan

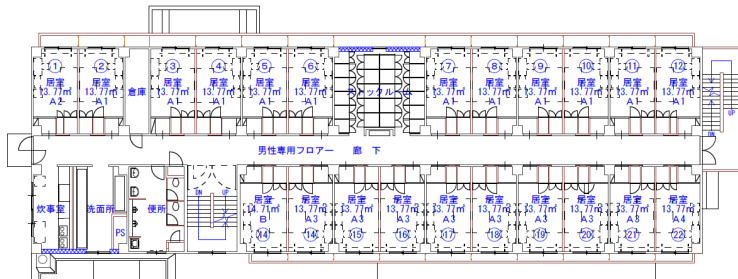
専有面積: 28.08m<sup>2</sup>  
共有面積: 3.74m<sup>2</sup>



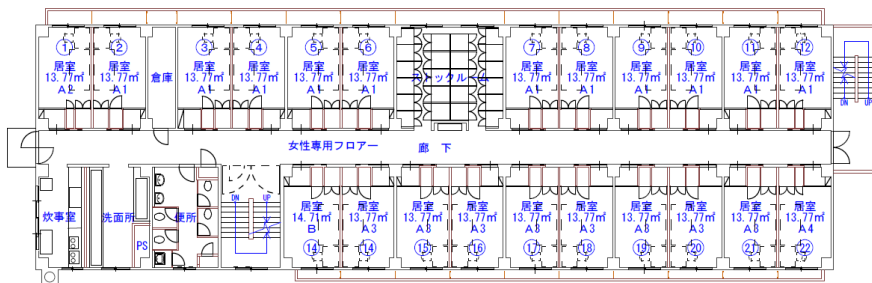
# Ground-plan



1 F



2 F



3 F

## MIZUKI DORMITORY (44 ROOMS)

At the time of contract	
Guarantee Charge	10,000 JPY
Deposit	None
Agent charge	None
Fire insurance	Including coverage for liability

Monthly Fee	
Rent	35,500 JPY
Common service	Included in rent.
Water (fixed amount)	Included in rent.
Disposal of garbage ※1	Included in rent.
Internet	Included in rent.
Linen	1,000 JPY (Tax-excluded)
Electricity	actual cost
Coin Laundry	200 JPY per use
Shower	100 JPY for 15 min

※1 There is no garbage collection service on Sundays, holidays and between January 1<sup>st</sup> and January 4<sup>th</sup>.

### After moving in

- ① After moving in, you are required to pay the first month rent (¥35,500), the bedclothes rental fee (¥1,000+tax), and the guarantee charge (¥10,000).
- ② Please read a rule book which will be provided after dormitory allocation.
- ③ The staff will give you contract documents, an application form for the dormitory, and an application form for automatic account transfers when you move in.
- ④ Residence card and acceptance letter of Kyoto University are required due to enrollment in the guarantee system.
- ⑤ You should enroll in **Personal Liability Insurance for Students** and **Special Clause for Persons Living Alone** at the Kyoto University Co-op.

3F	301	302	303	304	305	306	Stock room	307	308	309	310	311	312
	201	202	203	204	205	206	Stock room	207	208	209	210	211	212
1F	Entrance			Office			Orienter's office	Kitchen	Multipurpose Room				

<Balcony on the east side>

3F	Kitchen	Lavatory	Toilet	Stepway	313	314	315	316	317	318	319	320	321	322
	Kitchen	Lavatory	Toilet	Stepway	213	214	215	216	217	218	219	220	221	222
1F	Toilet	Washing room		Stepway	Combination room	Private		Private	Women's shower room			Men's shower room		

<Balcony on the West side>